

Installation instructions AWRON BMW flap control



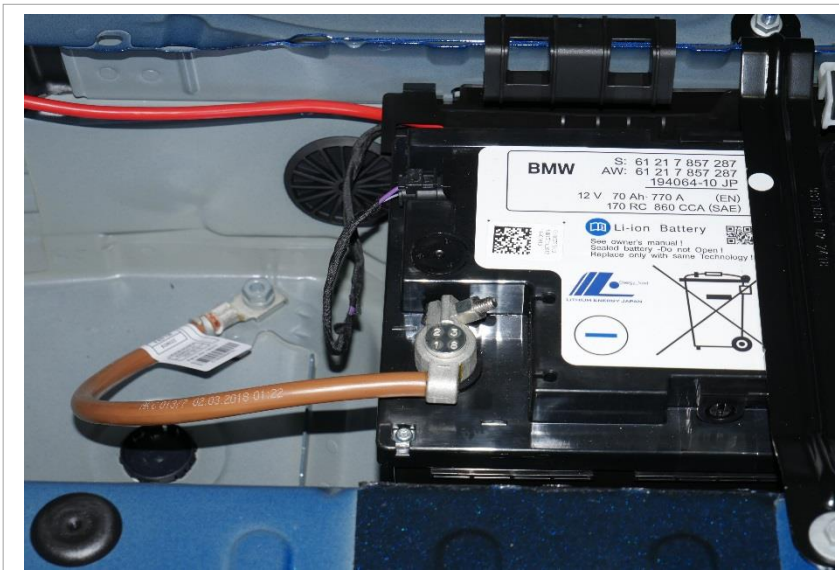
M3 G80
M4 G82
X3M F97
X4M F98



Needed tools



Disconnect the negative pole of the battery



Hexagon, wrench size 10mm

Disassembly of the cover under the glove compartment

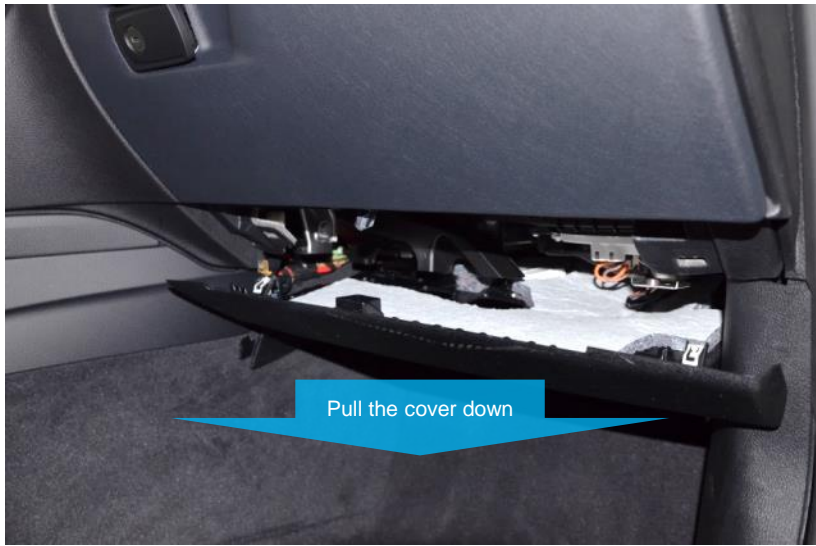


Hexagon, wrench size 8mm



Hexagon, wrench size 8mm

Disassembly of the cover under the glove compartment

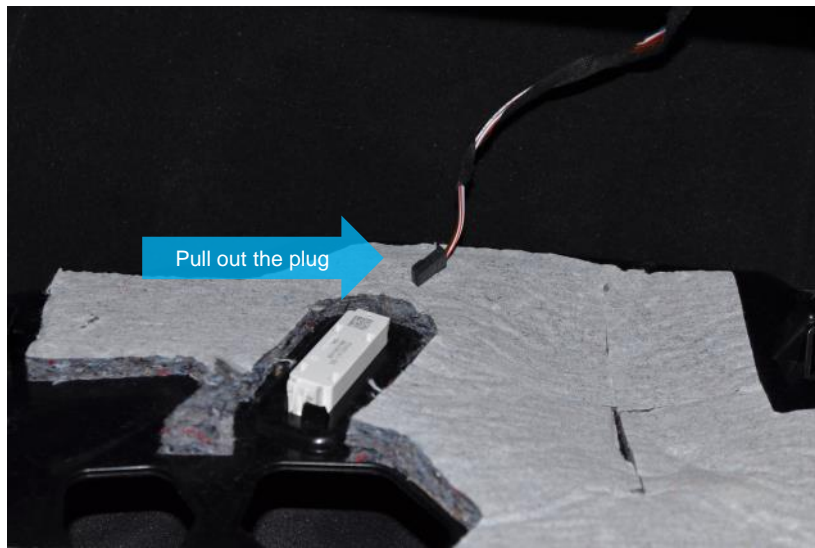


No tools necessary



No tools necessary

Disassembly of the cover under the glove compartment



No tools necessary

Disassembly of the cover under the glove compartment



Use a plastic wedge

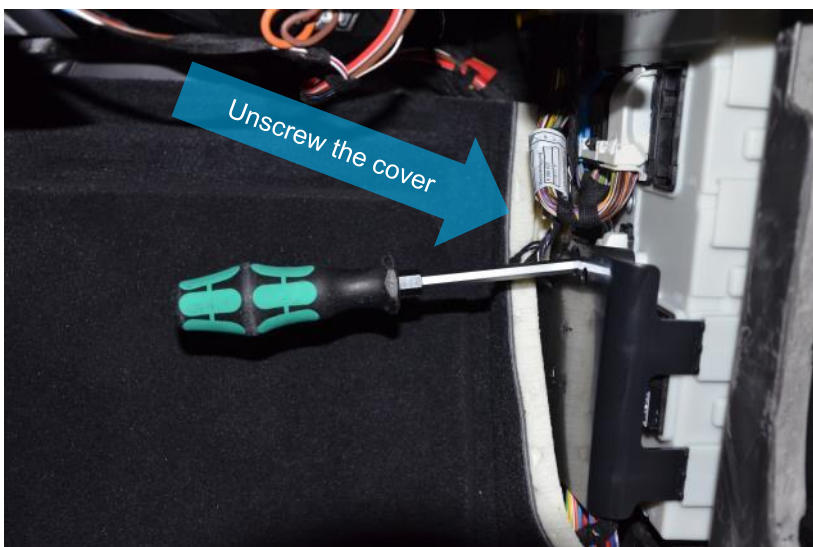


Use a plastic wedge

Disassembly of the side panel on the passenger side

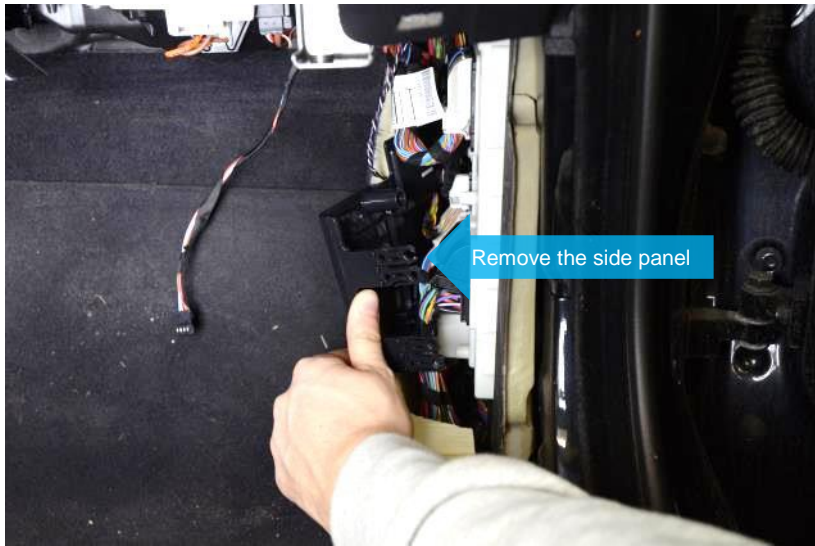


Use a plastic wedge



Torx T25

Exposure of the plug on the FEM control unit

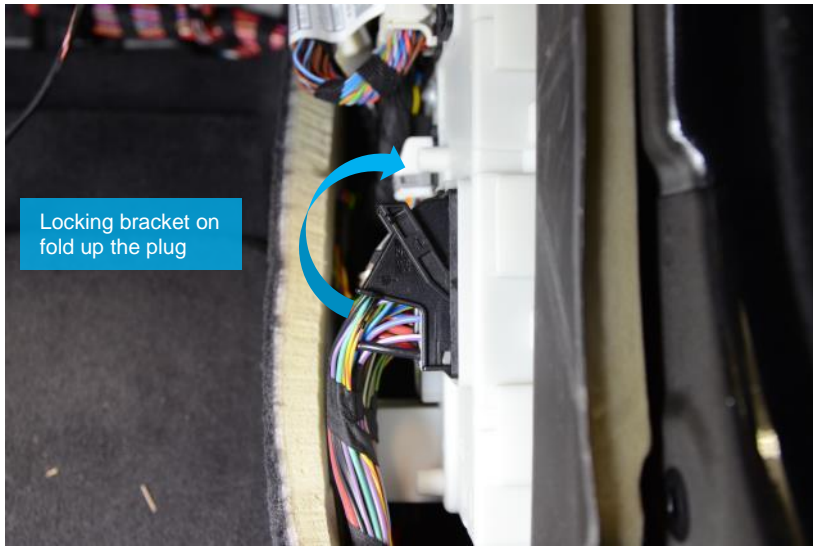


No tools necessary

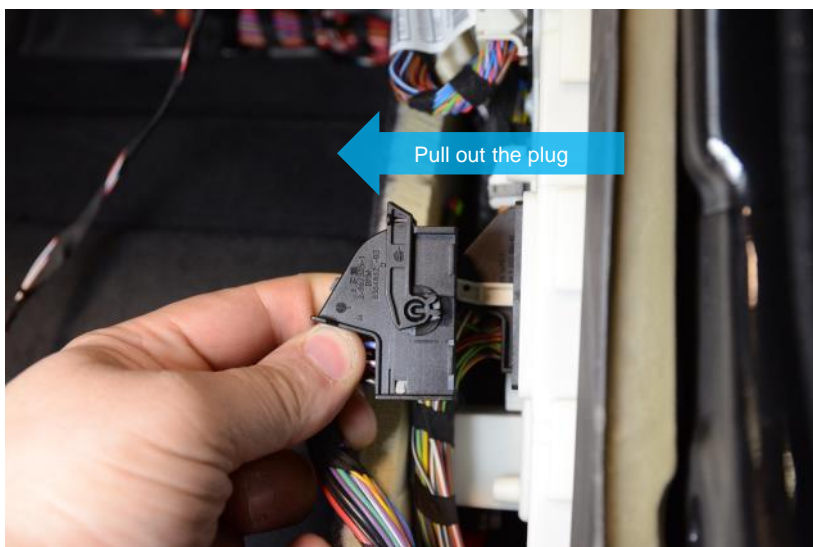


No tools necessary

Dismantle connector CON 3

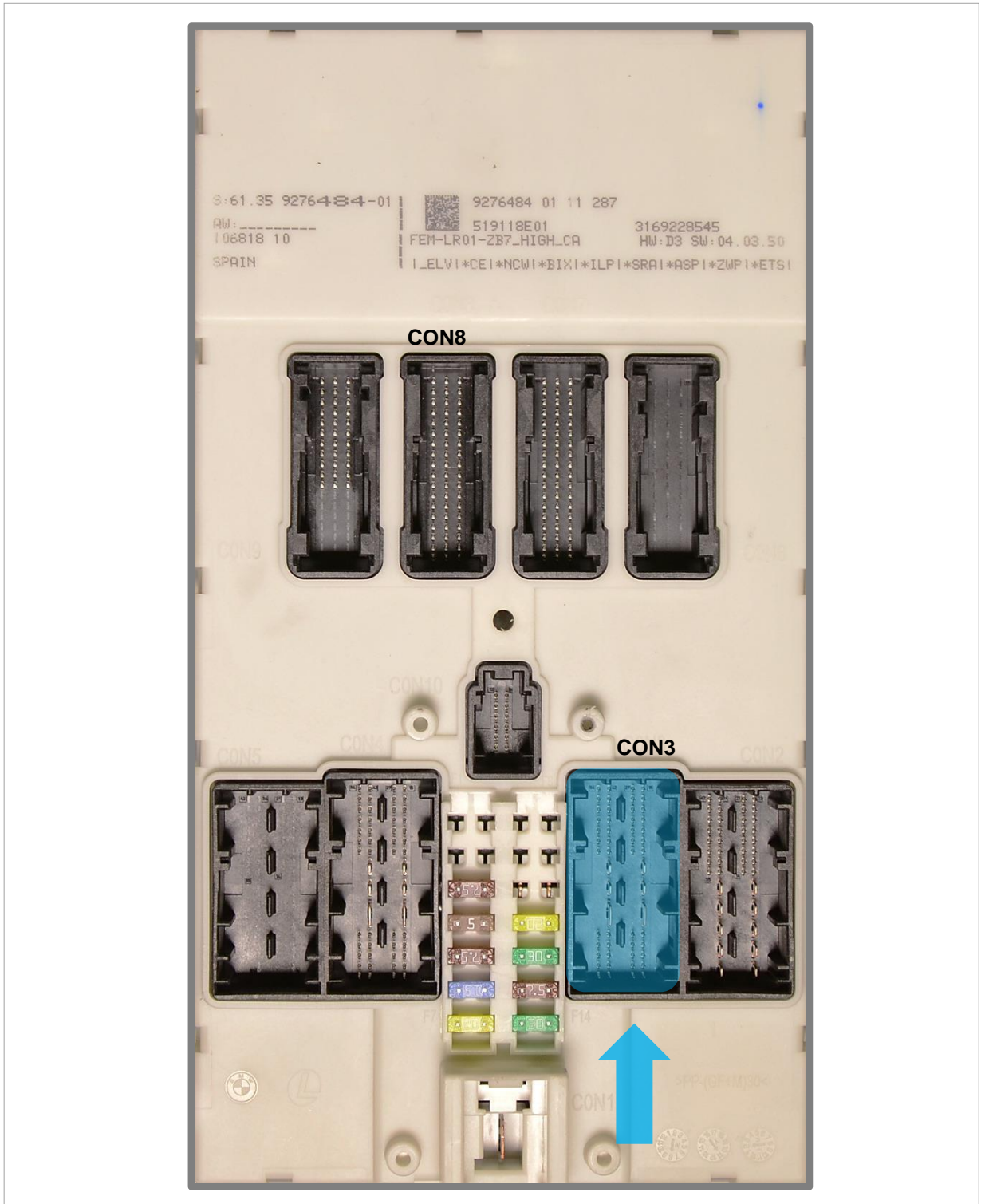


No tools necessary

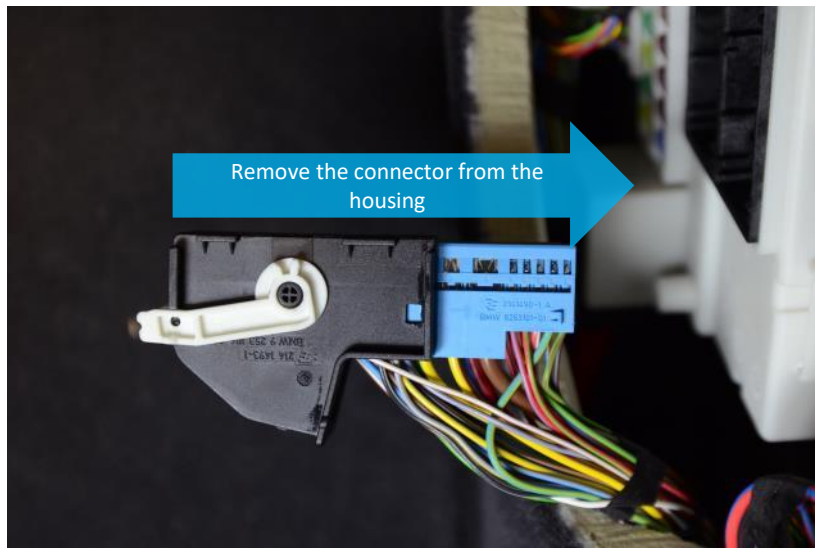


No tools necessary

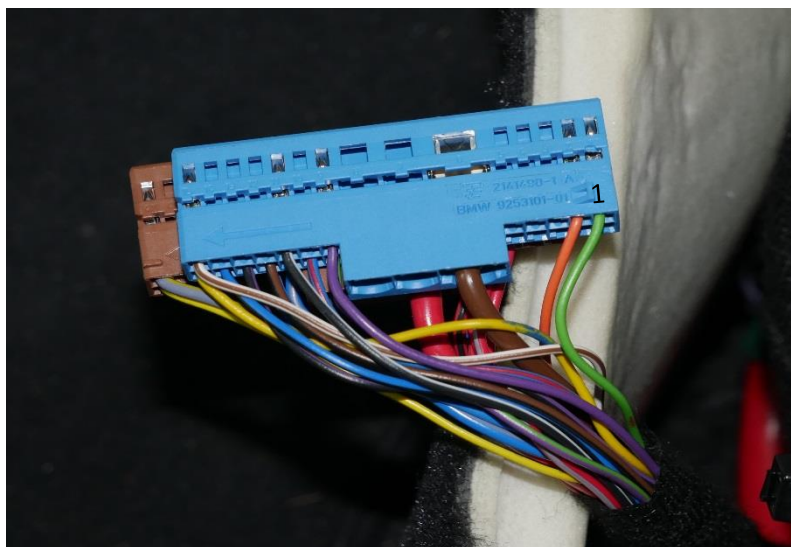
BDC CON 3



Unpin the cable from the chamber

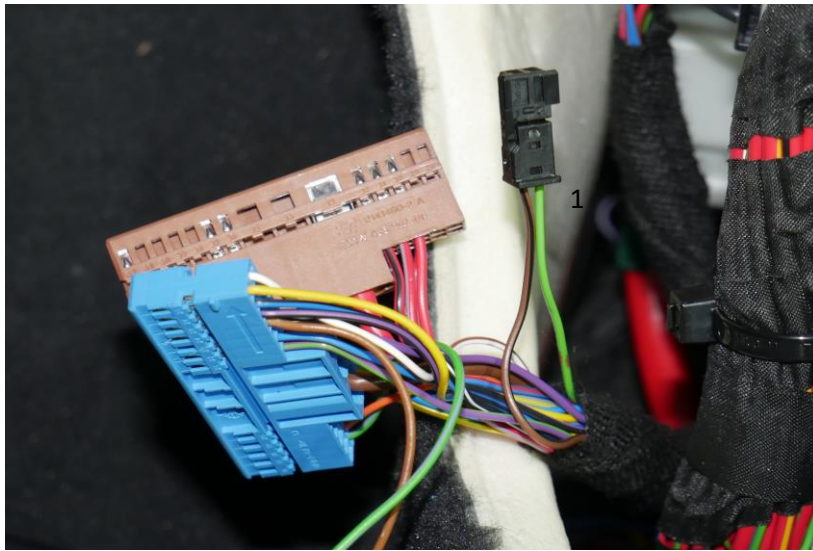


No tools necessary

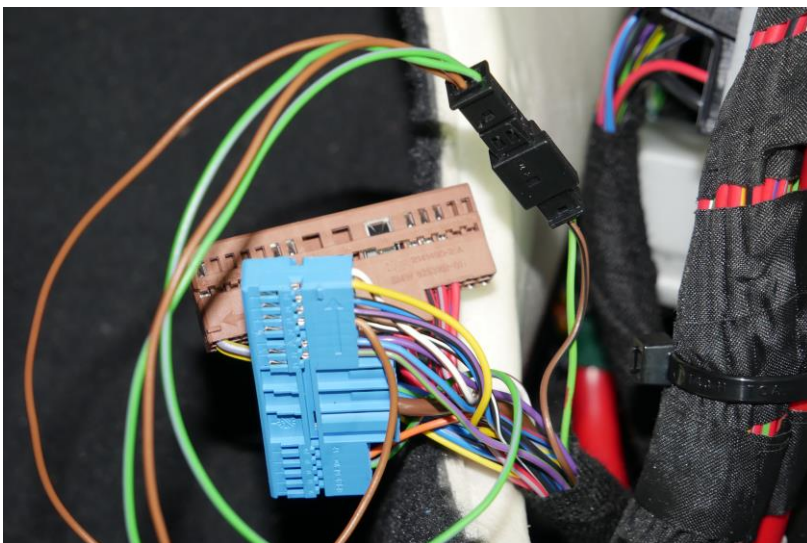


Flat screwdriver 2mm

Pin the cable in the plug and connect it

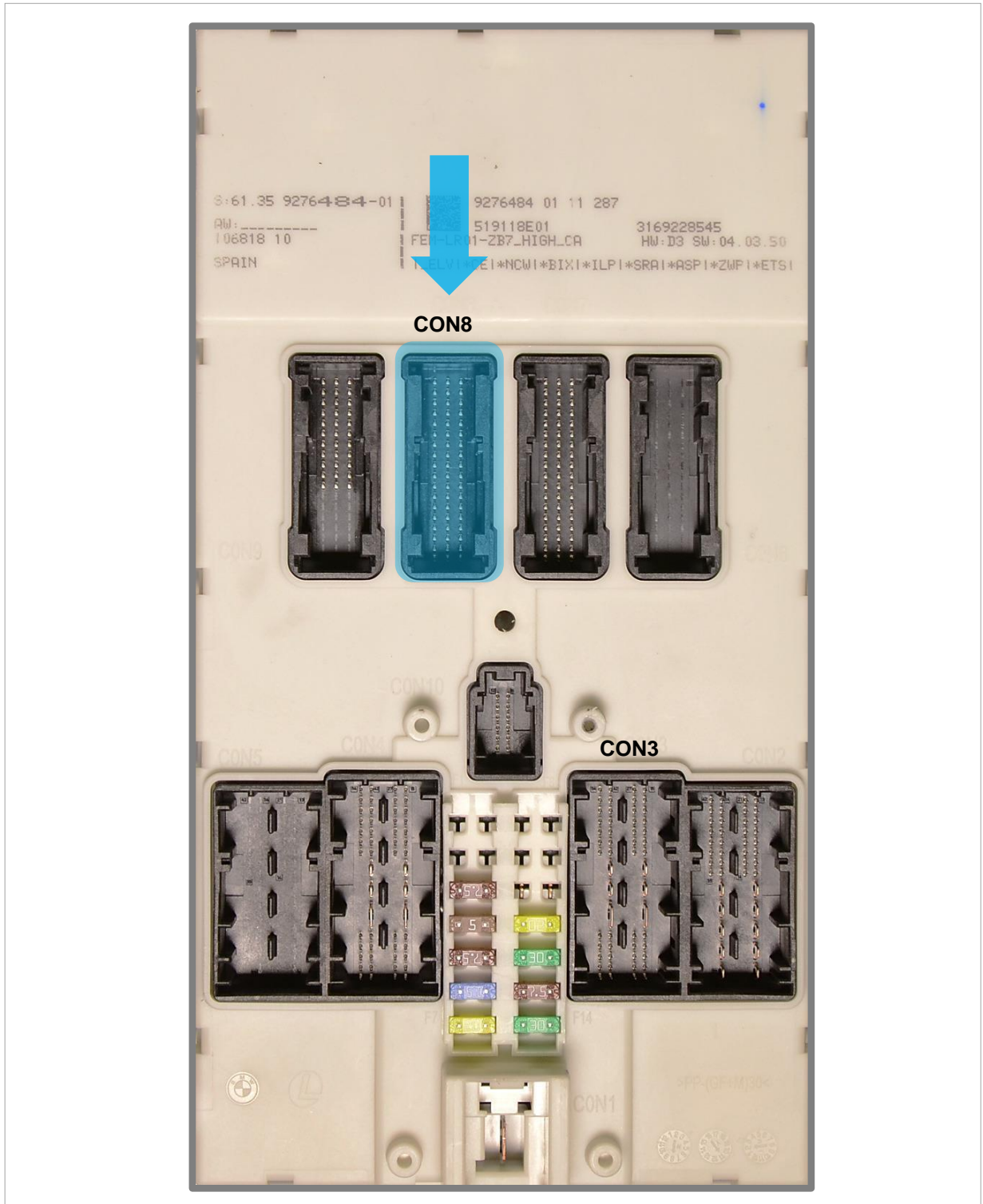


Pin 1 (green) in 2 pol. pin in socket housing pin 1
pin 24 (brown/black) in 2 pol. pin in socket housing pin 2



Green and brown/black cables from the AWRON cable
harness pin in chamber pin 1 and pin 24

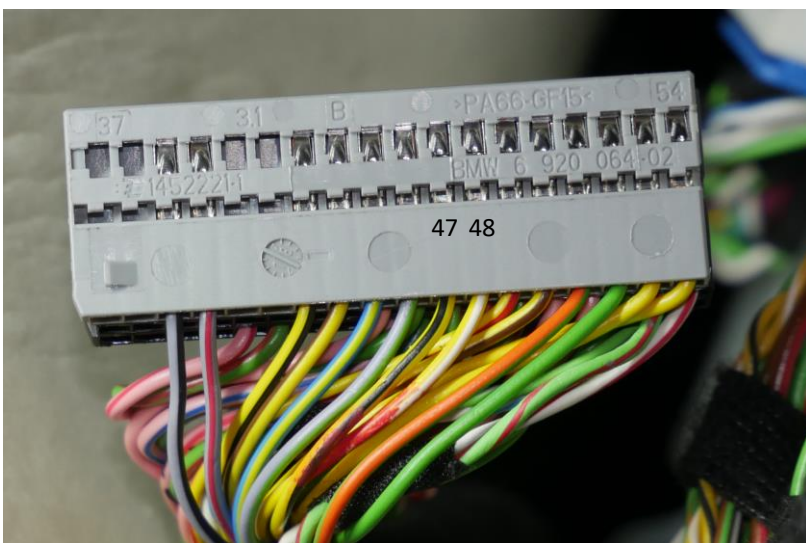
BDC CON 8



Dismantle plug CON 8

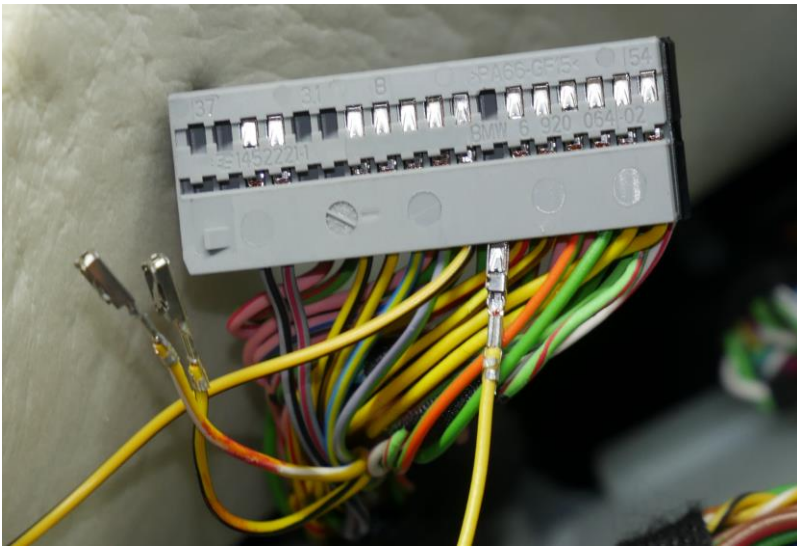


Dismantle plug CON 8

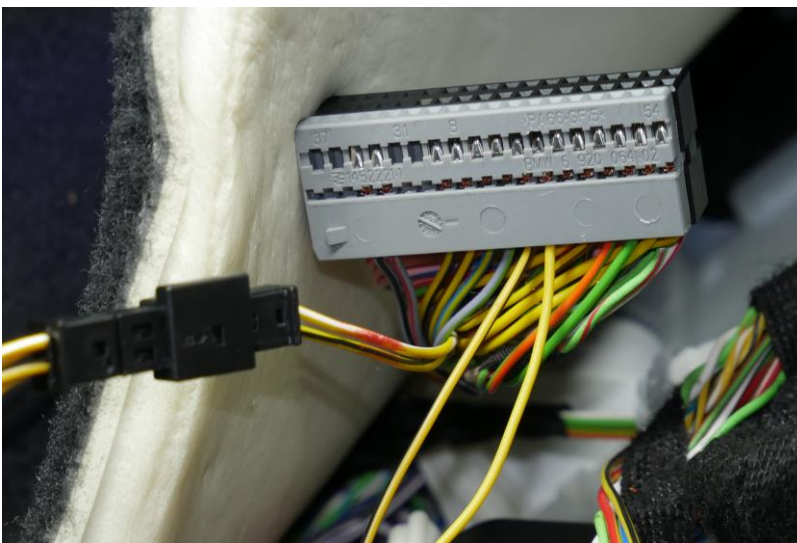


Pin 47 (yellow/black) CAN_LOW
Pin 48 (yellow/white) CAN_HIGH

Dismantle plug CON 8



From AWRON cable harness, cable (yellow/black) to pin 47 and pin the cable (yellow/white) to pin 48



Cable (yellow/black) on pin 1 and (yellow/white) on pin 2 (black) 2 pol. pin in the socket housing and connect to the pin housing

Dismantle plug CON 8



Unpin pin 53 (yellow) and plug it into 2 pol. socket housing pin 1 pin in



Dismantle plug CON 8



Yellow cable in 2 pol. pin in socket plug pin 1



Pin the yellow cable from the AWRON cable harness to pin 53, plug the socket and plug housings together

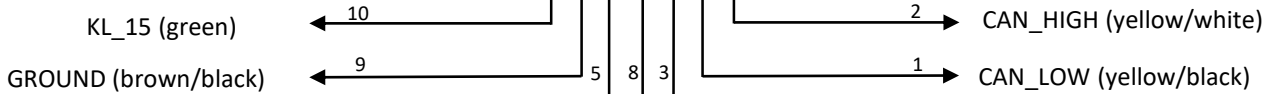
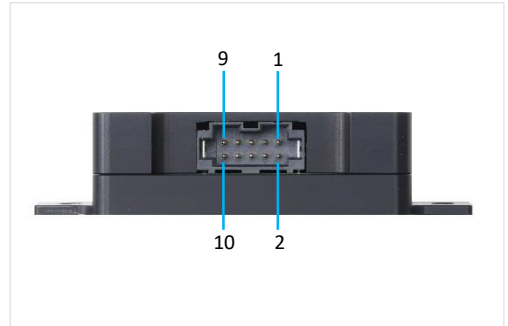
Circuit diagram

AKS pin assignment



Pin assignment 10 pol. Plug

- 1 = CAN_LOW (yellow/black)
- 2 = CAN_HIGH (yellow/white)
- 3 = PWM (green)
- 4 =
- 5 = PWM (pink)
- 6 =
- 7 = 8 = PWM (pink)
- 9 = GROUND (brown)
- 10 = KL_15 (green)



Solder connector
Shrink tubing

PWM (pink)

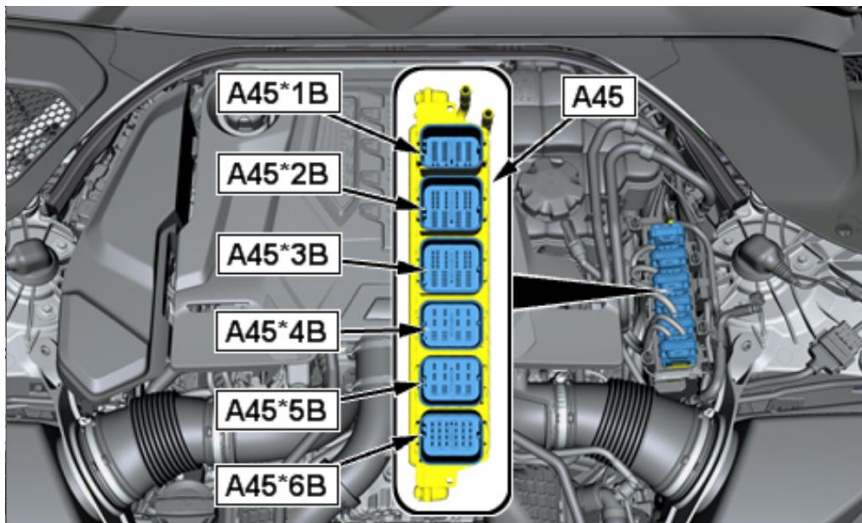
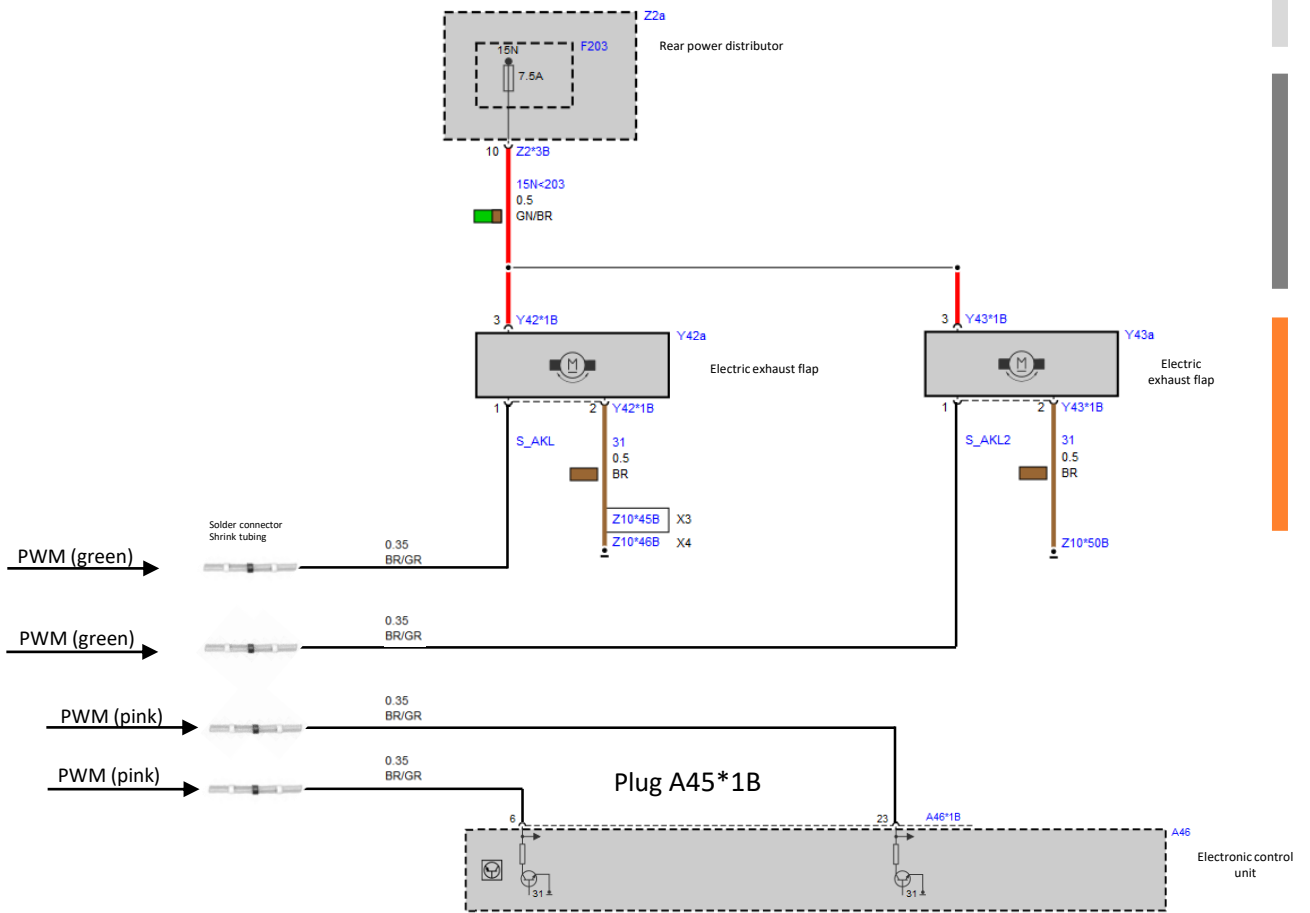
PWM (pink)

PWM (green)

PWM (green)



Cable harness engine control unit plug 1 - pin 6 and pin 23



Cable harness engine control unit plug 1

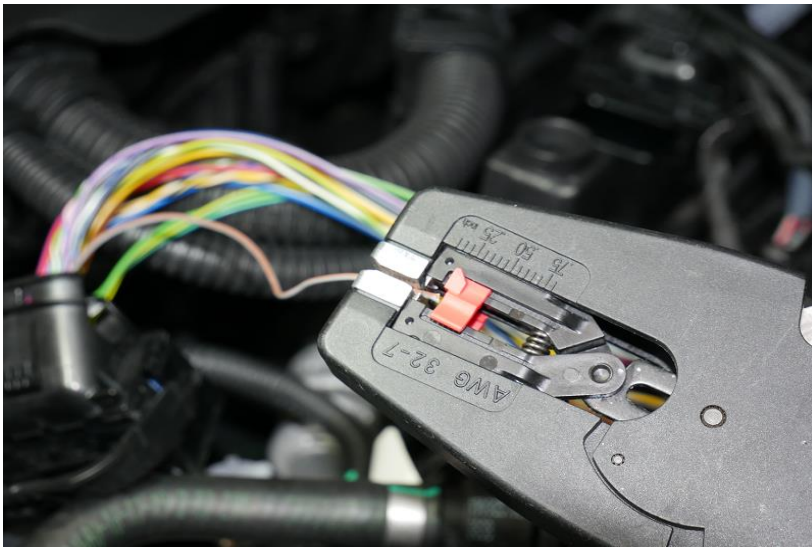


Remove insulation from cable harness



Cut the brown/gray cable

Cable harness engine control unit plug 1



Strip both ends of the cable

1. Prepare the wire



2. Position wires into solder splice



3. Tubing will shrink and solder will melt and flow through the shipped wires



Connect one solder connector on the ECU side of the cable
Connect the other solder connector with exhaust flap side

Scope

- Exhaust flap module
- Cable harness
- 3 x 2 pol. plug housing
- 4x solder connector



Contact



AWRON-automotive
Inh. Robert Sop
Herbergstrasse 21
80995 München
Germany

Tel. +49 (0)89 37911860

E-Mail: info@awron-automotive.de

Webseite: www.awron-automotive.de